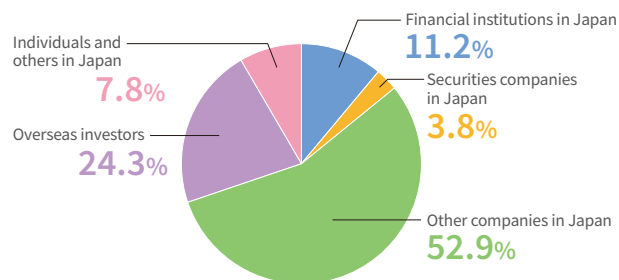


Ratio of Shares by Shareholder Type (as of March 31, 2019)

- 1) Total Number of Authorized Shares by Resolutions:
200,000,000 shares
- 2) Total Number of Outstanding Shares
(except 2,670,805 shares of treasury stock): 54,958,335 shares
- 3) Number of Shareholders: 9,175
- 4) Major Shareholders

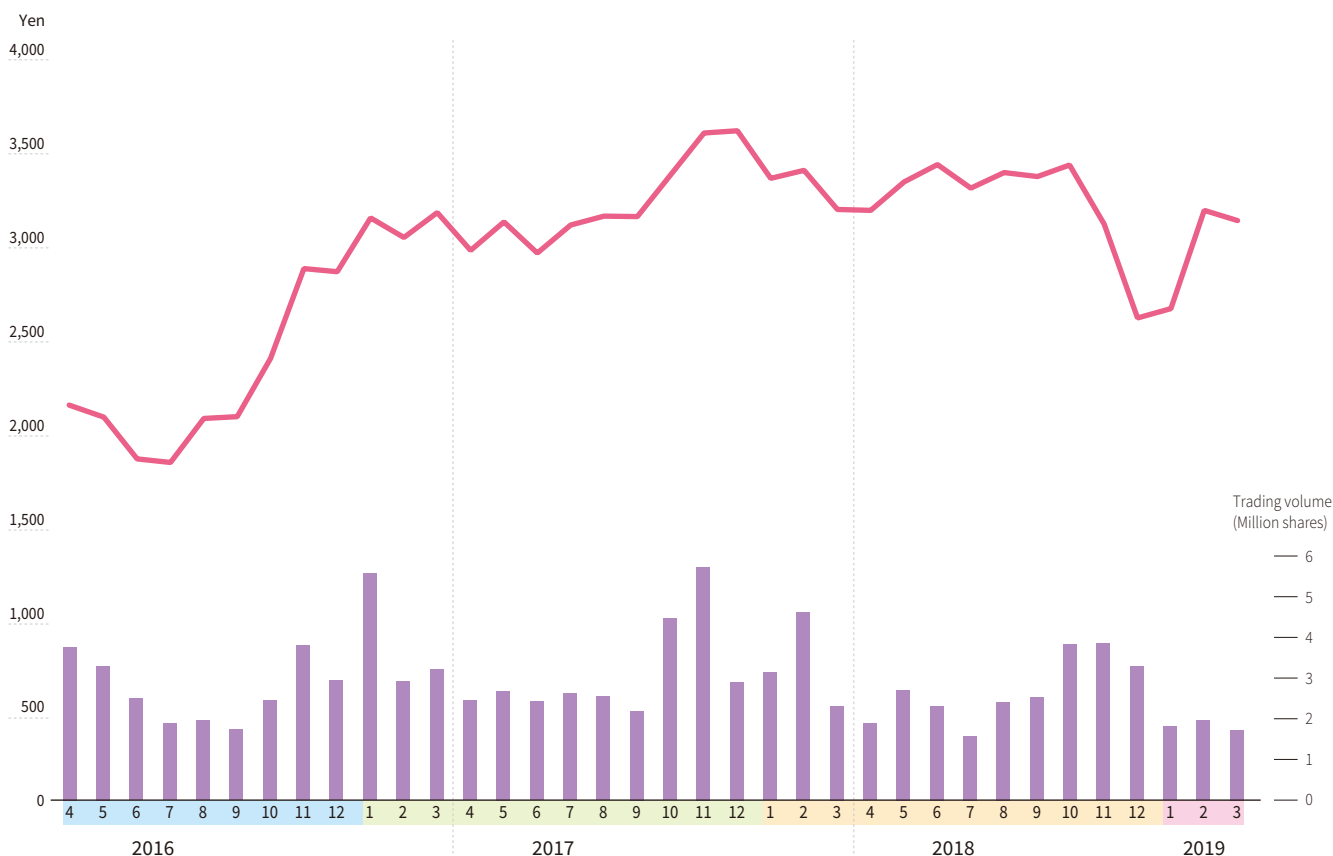
Breakdown by Shareholder



Shareholder	Number of shares held (thousand shares)	Shareholding ratio (%)
Toshiba Corporation	28,827	52.5
Goldman Sachs International	1,649	3.0
Goldman Sachs and Company Regular Account	1,636	3.0
THE BANK OF NEW YORK BNY GCM CLIENT ACCOUNT JPRD AC ISG (FE-AC)	1,395	2.5
Credit Suisse Securities Limited	1,323	2.4
The Master Trust Bank of Japan, Ltd.	1,140	2.1
J.P. MORGAN BANK LUXEMBOURG S.A. 1300003	1,123	2.0
Japan Trustee Services Bank, Ltd. (Trust account)	934	1.7
Toshiba Tec Employees Shareholding Association	924	1.7
BNYM SA/NV FOR BNYM FOR BNYM GCM CLIENT ACCTS M ILM FE	854	1.6

Note: The shareholding ratio is calculated by subtracting treasury stock from the total number of outstanding shares.

Stock Price and Trading Volume Trends



* The Company carried out the share consolidation at a ratio of one for every five common shares, effective on October 1, 2018. Accordingly, the stock price and trading volume have been calculated assuming that the share consolidation was executed at the beginning of 2016.